

# MULTI ACADEMY TRUSTS

**MAKING A CHOICE FOR SPRINGWATER**

Governors reviewed a short list of 3 Trusts between March and November 2023  
The comprehensive and detailed review covered the following:

- Cultural fit
- Pupil profile and Trust size
- Curriculum
- Ofsted results
- Trust Board and Central services
- Governance model
- Financial management
- Staff development, pay and conditions

## **Governors have applied to the DfE to join the Ascent multi academy trust**

**Ascent is a Specialist Trust with 4 schools in the Northeast**

- The culture and values of Ascent align with our own
- Their pupil profile and curriculum pathways match ours
- We can start taking the benefits of Trust membership for pupils and staff

# **ADVANTAGES FOR SPRINGWATER**

## **Benefits for pupils**

- Improved provision for all through collaboration with peers in a similar environment
- Improved IT support from central services to benefit pupils
- Improved investment in buildings and facilities

## **Benefits for staff**

- Improved career development and opportunities for staff
- Central Services remove workload from Headteachers and staff

## POSSIBLE DISADVANTAGES FOR SPRINGWATER?

- Loss of identity? - Springwater retains its identity
- Increased costs due to 'top slicing'? – Benefits and savings outweigh the costs
- Distance from other trust schools ? - Mowbray (Ripon & Bedale) are also joining Ascent
- Staff structure ? - There are no current plans to make changes

# Joining an Academy Trust

## What Changes?

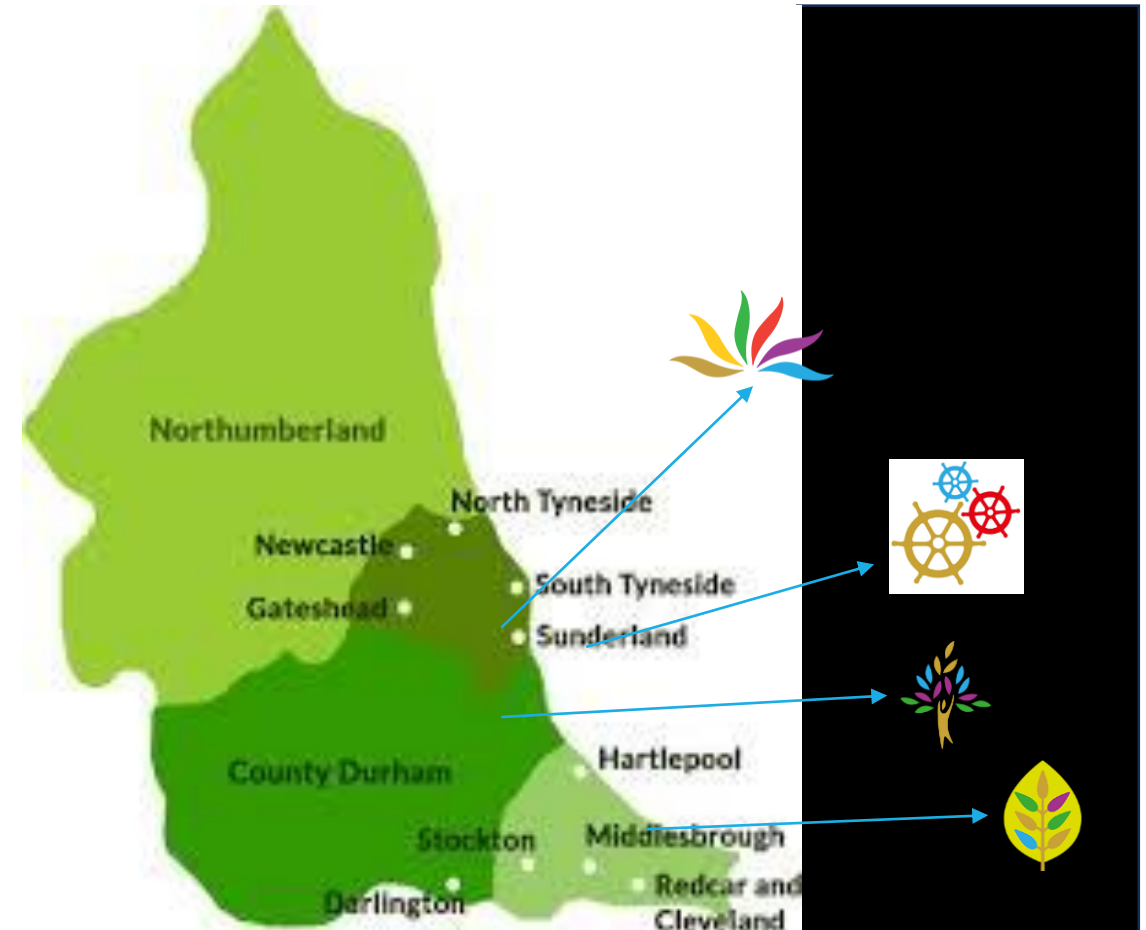
- The Governing Board is replaced by a Schools Council
- The Council is responsible to the Trust for the quality of education
- The Trust takes over all the remaining Governing Board responsibilities  
e.g. Strategic planning, finance, estates, staffing
- The Trust applies direct to the DfE for capital funding

## What stays the same?

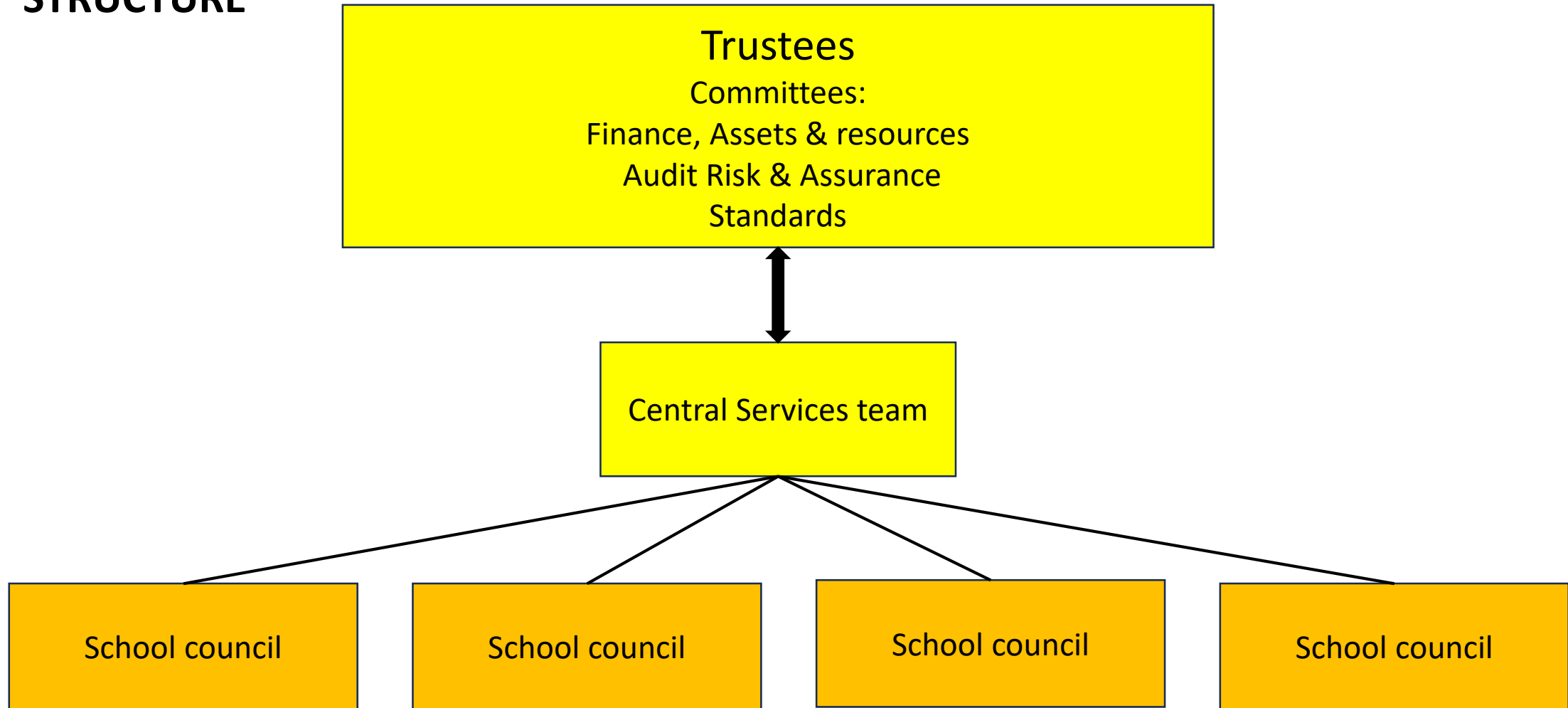
- North Yorkshire remains responsible for
  - 'Higher Needs' funding
  - Allocating pupil places in Springwater
  - Admission criteria unchanged
  - Granting EHCP plans

# ASCENT TRUST

- 4 special academies across 3 Local Authorities
- Barbara Priestman Academy 11-19 autism and complex needs 174 pupils Ofsted Good 2018
- Portland Academy 11-19 SLD and PMLD 172 pupils Ofsted Good 2019
- Hope Wood Academy 2-19 ASD SLD MLD PMLD 216 pupils Ofsted Good 2018
- Ash Trees Academy 2-11 SLD and PMLD
- 172 pupils Ofsted Good 2022



# ASCENT TRUST STRUCTURE





## NEXT STEPS

- Engagement with parents, carers and the local community stakeholders
- Engagement for colleagues and visits to the Trust Schools
- Statutory Consultation
- DfE Regional Board 19<sup>th</sup> March 2024
- Due Diligence processes.
- Conversion proceeding following the March regional board decision
  - this can take several months and may be achievable by September 2024